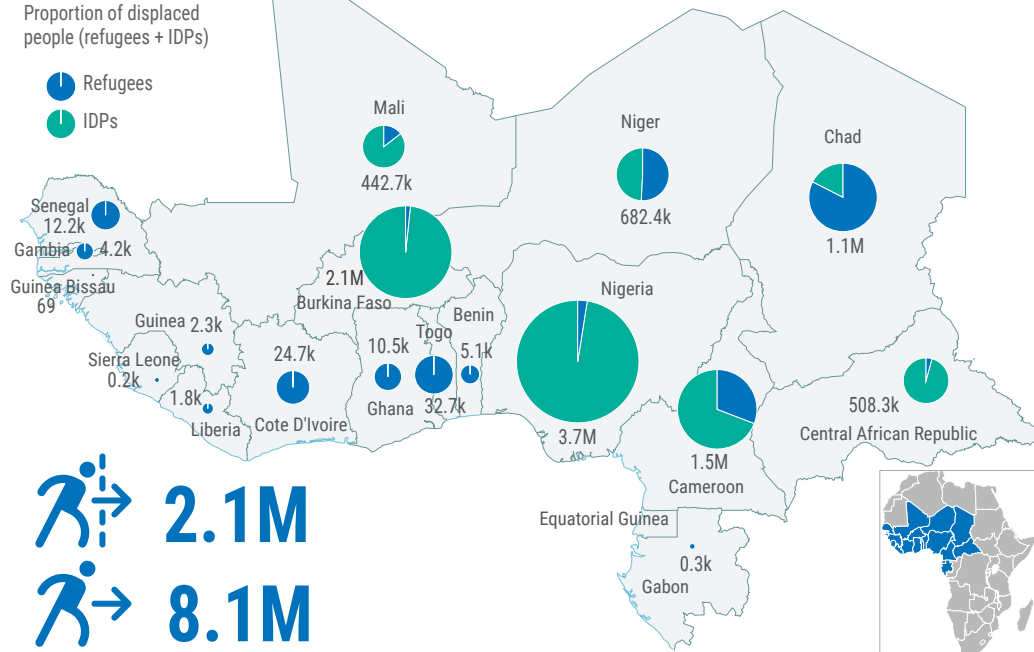


OPERATIONAL CONTEXT

Proportion of displaced people (refugees + IDPs)



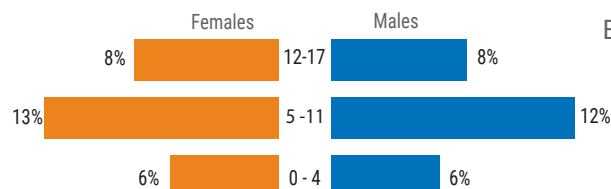
Total number of Refugees and IDPs



2.1M
8.1M

KEY FIGURES

Age and Gender (Refugees)

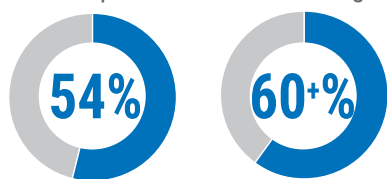


+ 7%

People displaced between June 2022 and July 2023

1.1M **4.9M**

Estimated displaced children in the region



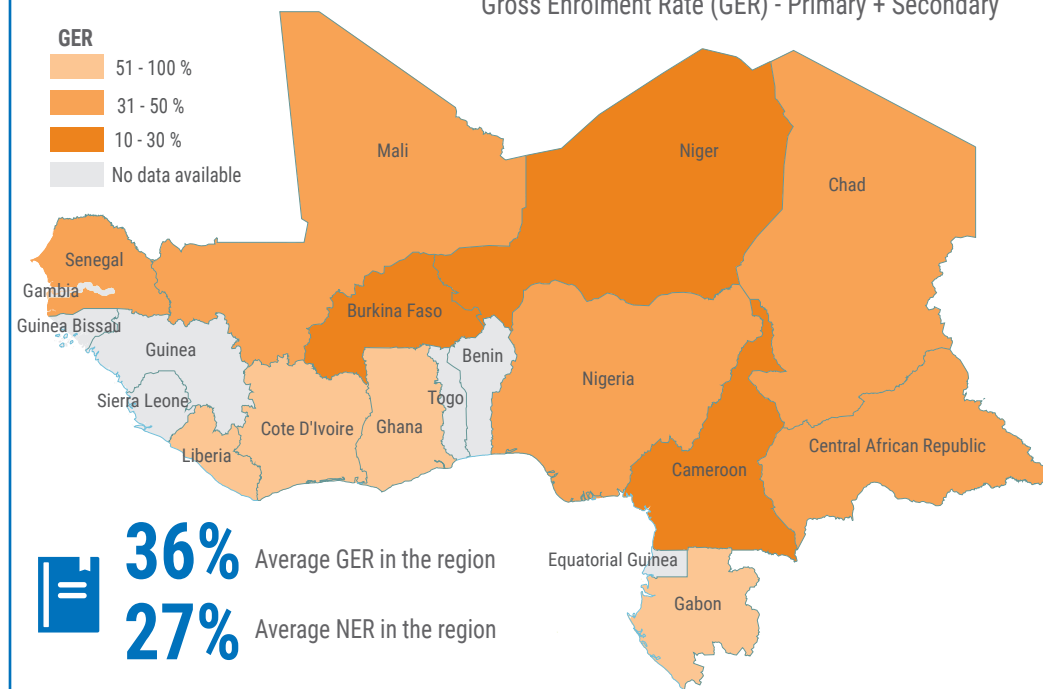
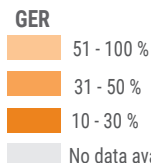
54%
Children among the refugees

60%+
Children among the IDPs*

* Estimate average in the region

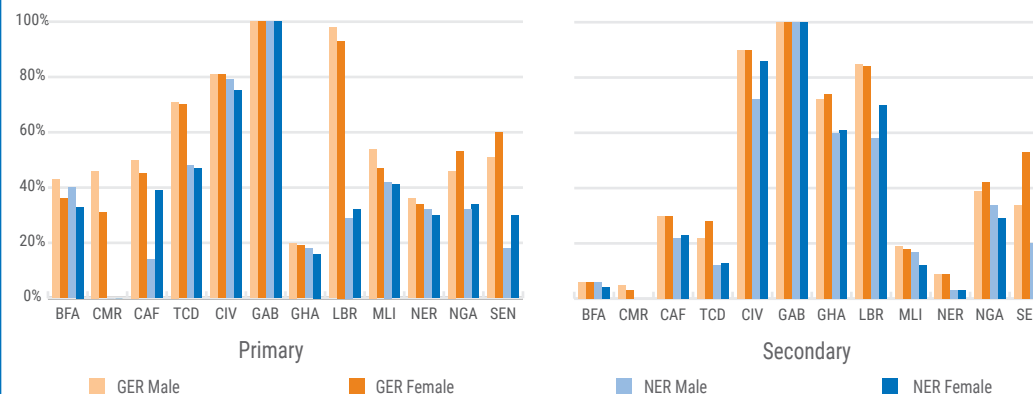
REFUGEE EDUCATION OVERVIEW

Gross Enrolment Rate (GER) - Primary + Secondary



36% Average GER in the region
27% Average NER in the region

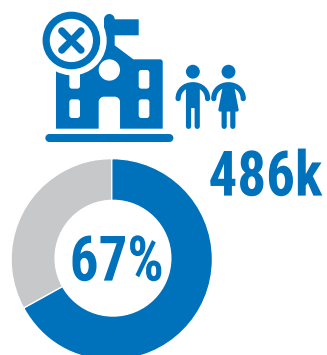
Gross and Net Enrolment Rates (GER and NER) comparison by gender



Selected countries: BFA: Burkina Faso; CMR: Cameroon; CAF: Central African Republic; TCD: Chad; CIV: Ivory Coast; GAB: Gabon; GHA: Ghana; LBR: Liberia; MLI: Mali; NER: Niger; NGA: Nigeria; SEN: Senegal

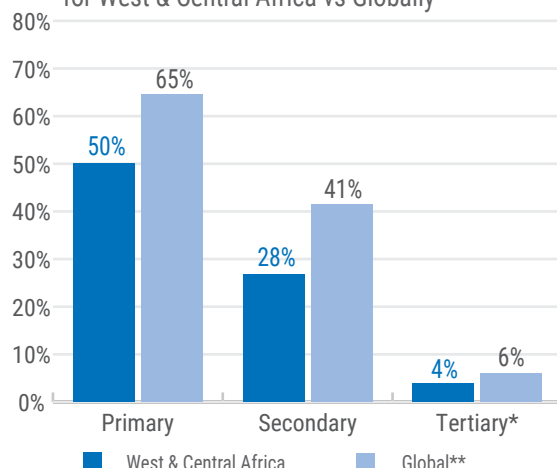
REFUGEE EDUCATION OVERVIEW

Out of school children



Estimated proportion of refugee children out of school

Comparison of refugee enrolment rates by school level for West & Central Africa vs Globally

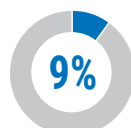
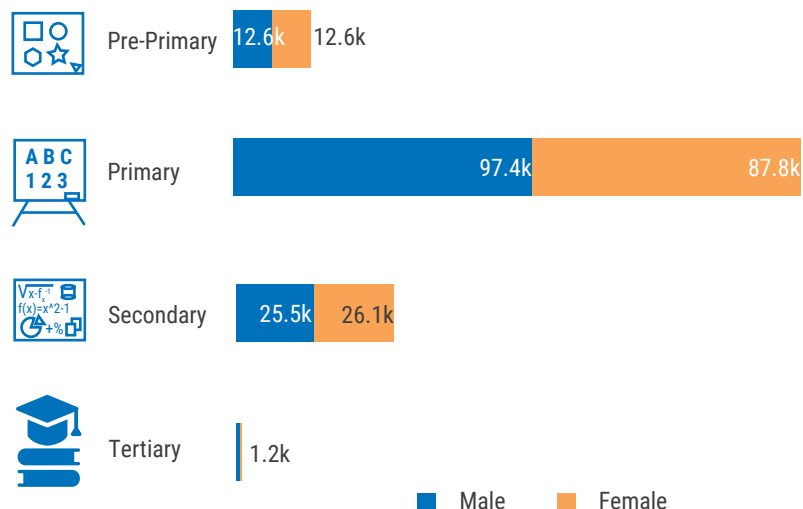


* The estimated proportion of 18-24 youth enrolled in higher education or technical and vocational education and training (TVET).

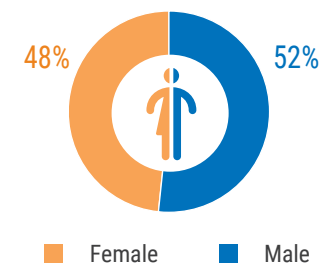
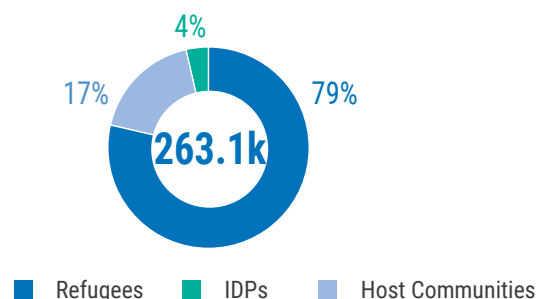
** Global enrolment rates refer to the 2021-2022 school year.

UNHCR'S EDUCATION RESPONSE AND ASSISTANCE

Children/youth reached by level



Children/youth reached by status



KEY ACHIEVEMENTS



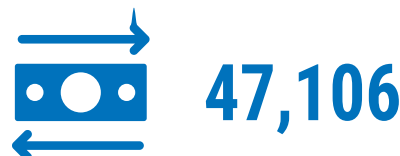
Classrooms built or rehabilitated



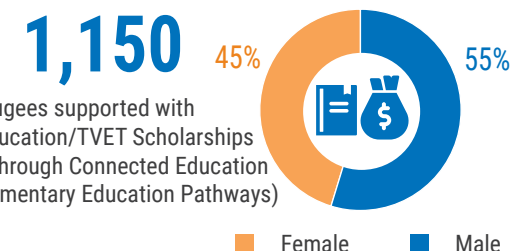
Schools supported with WASH interventions



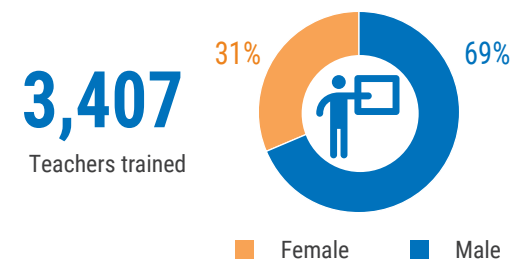
Children assisted with school kits



Children assisted with cash-based interventions (CBI)



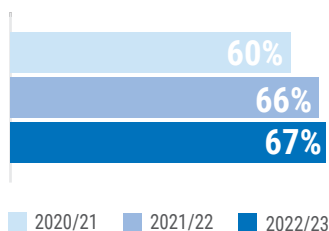
Refugees supported with Higher Education/TVET Scholarships (including through Connected Education and Complementary Education Pathways)



Teachers trained

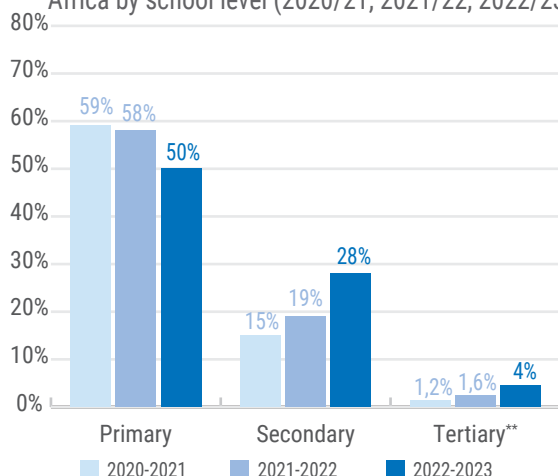
ENROLMENT RATES FROM 2021 TO 2023

Out of school children



Estimated proportion of refugee children out of school by school year

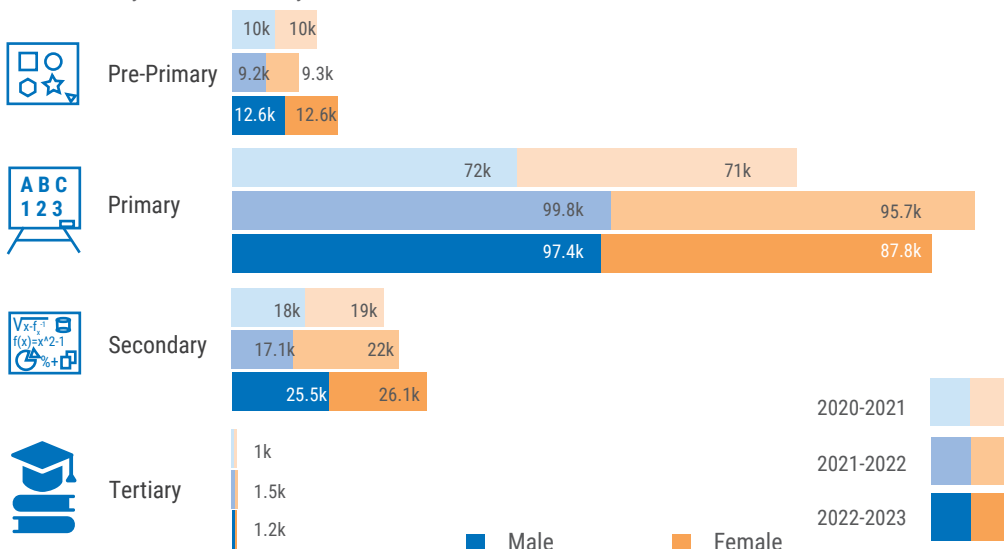
Comparison of refugee enrolment rates in West & Central Africa by school level (2020/21; 2021/22; 2022/23)*



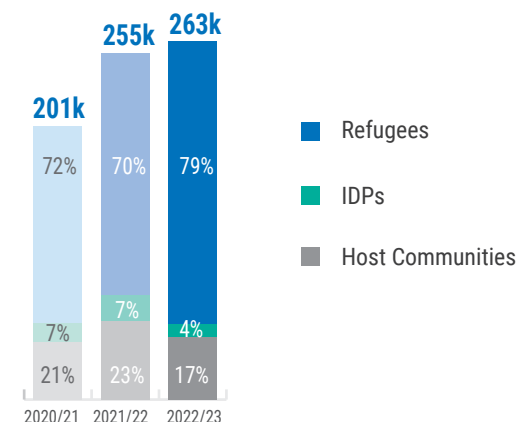
** The estimated proportion of 18-24 youth enrolled in higher education or technical and vocational education and training (TVET).

UNHCR'S EDUCATION RESPONSE AND ASSISTANCE

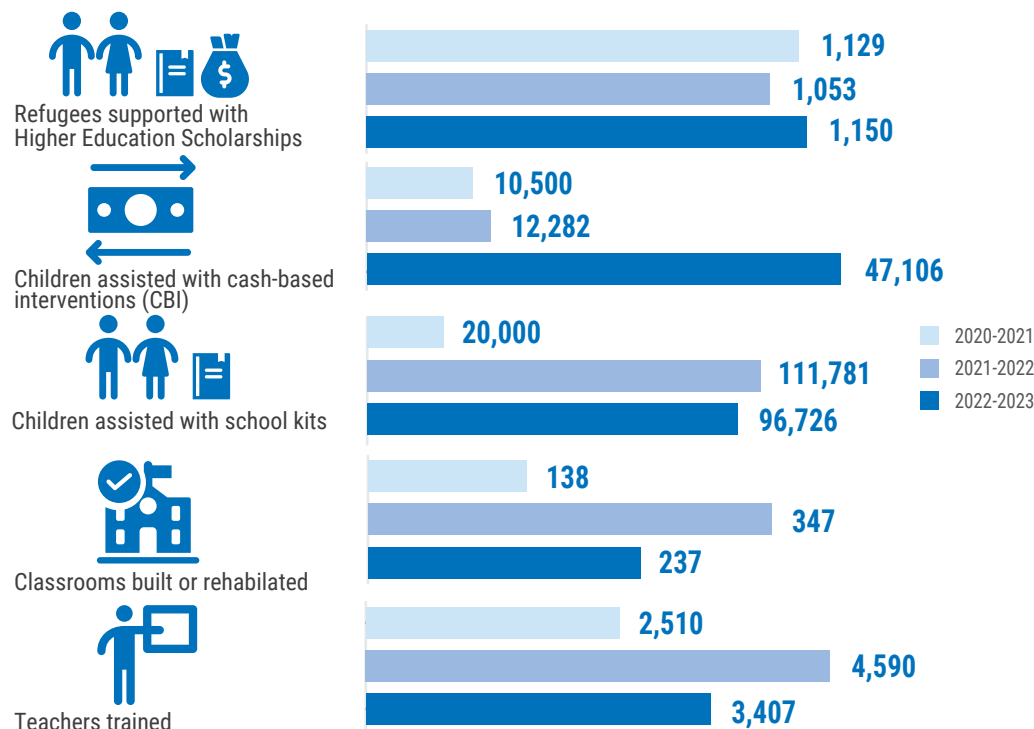
Children/youth reached by level



CHILDREN/YOUTH REACHED BY STATUS



KEY ACHIEVEMENTS



* The countries included in the calculation of the regional GER vary slightly between 2022 and 2023 (depending on the availability and quality of the data).
11 countries were included in the 2022 regional GER (Burkina Faso, Cameroon, Central African Republic, Chad, Ivory Coast, Liberia, Mali, Niger, Nigeria, Senegal and Togo), and 9 in 2023 (Burkina Faso, Cameroon, Central African Republic, Chad, Ghana, Mali, Niger, Nigeria and Senegal).

KEY HIGHLIGHTS

- The West and Central Africa region continues to face severe issues of **insecurity and lack of access to basic services**, especially education (over [13,000 schools closed](#) across the region at the end of the school year), exacerbating the vulnerability of host and refugee populations. The spillover of the Central Sahel conflict continues to affect the coastal countries (Benin, Ghana, Ivory Coast, Togo), with an increase in population movements and refugee flows, particularly from Burkina Faso.
- The increase in the number of forcibly displaced persons (refugees and IDPs) in the region (+7% between June 2022 and June 2023), coupled with the deteriorating security context, is reflected in a **decrease in the regional primary school enrolment rate for refugees** compared to the previous year (8 percentage points). The total number of **out-of-school refugee children** increased (485,953 compared with 381,259, with a slight increase in the proportion of school-age refugee children not attending school, which remains very moderate given the deterioration of the situation in many countries in the region (67% compared with 66%).
- More encouraging is the **increase in secondary and tertiary enrolment rates for refugees**, by 9 and 2.5 percentage points respectively, confirming the upward trend already observed between 2021 and 2022. This is due, among other things, to increased targeted support for secondary school students and the development of new partnerships, which made it possible to provide more scholarships than last year at post-secondary and tertiary levels for university studies (including through connected higher education opportunities and university corridors to third countries) and vocational training (thanks to new partnerships with SIMPLON and the BIOFORCE training institute). Partnerships with the private sector (ORANGE, PROFUTURO) have also helped to improve the quality of education in Burkina Faso and Nigeria through innovative connected education projects.
- **Enrolment rates for refugees in West and Central Africa remain lower than for refugees worldwide** (50% against 65% at primary level, 28% against 41% at secondary level, and 4% against 6% at tertiary level). These rates are also significantly **lower than national enrolment rates** in almost all the countries in the region, with a few exceptions (notably Chad and the Central African Republic, where refugee enrolment rates at secondary level exceed national enrolment rates).
- In terms of **UNHCR assistance**, there has been a steady increase in the number of refugee children and adolescents reached since 2021, with an increase in the proportion of refugees targeted (compared to IDPs and host communities). It is also worth noting the **significant increase in the use of cash-based assistance** (CBI), with four times as many children reached this way this year as last.

MAIN GAPS



Attacks on education



Systemic underfunding



Under-resourced and overcrowded classrooms



Lack of qualified teachers



Gender and sociocultural norms



Incomplete data on refugee education

SUB-REGIONAL AND COUNTRY DASHBOARDS



DONOR CONTRIBUTIONS

UNHCR is grateful for the support of donors who contributed to its education response in the West and Central Africa region either directly or through flexible funding:


Belgium
 partner in development

 In partnership with
Canada

CZECH REPUBLIC
 HUMANITARIAN AID

 Government of Iceland
 Ministry for Foreign Affairs

Irish Aid
 Rialtas na hÉireann
 Government of Ireland

LUXEMBOURG
 AID & DEVELOPMENT

Gouvernement Princier
 PRINCIPAUTÉ DE MONACO

Cooperación Española

 Schweizerische Eidgenossenschaft
 Confédération suisse
 Confederazione Svizzera
 Confederaziun svizra
 Swiss Agency for Development and Cooperation SDC

ProFuturo

 A PROGRAMME OF:
 Fundación Telefónica

Fundación Telefónica



from the British people

And private donors from France, Italy, Japan, Korea, Nigeria, Spain, and the United States.